

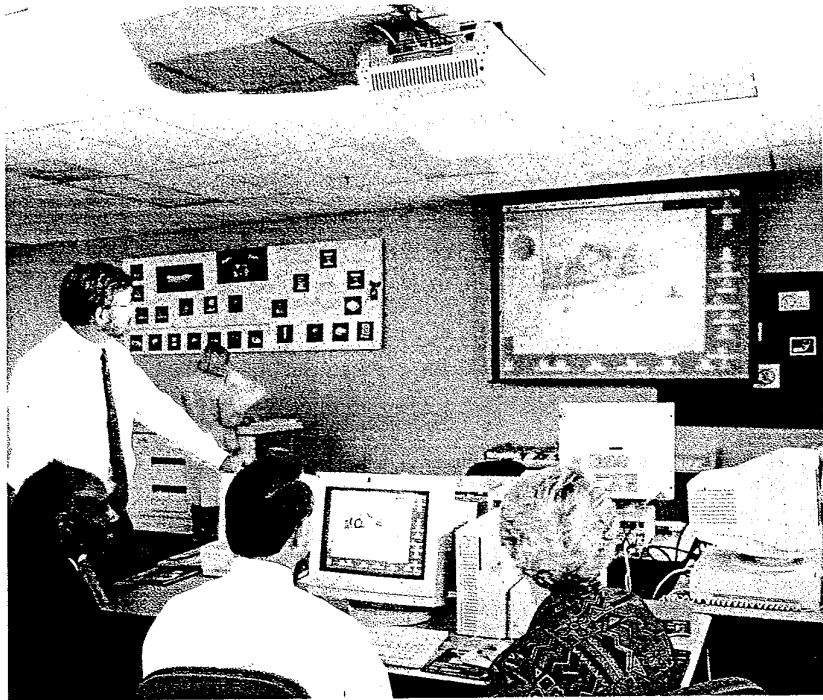
BARCO

BARCODATA 801s and 1101
Digitally Controlled
Video and Data Projectors



Give your presentations the right impact !

BARCO has introduced two new large screen Video/Data projection systems, which offer the very best performance for today's most demanding presentation and training applications: the BARCODATA 801s and BARCODATA 1101.



ULTRA WIDE COMPATIBILITY

The new BARCODATA 801s and the BARCODATA 1101 offer unmatched price and performance value for today's presentation and training markets. Each unit can display all worldwide Video standards (PAL, SECAM, NTSC 3.58, NTSC 4.43) as well as RGB signals from a wide range of PC graphics boards up to resolutions of 1180 by 900 pixels/60 Hz.

EXTREMELY USER-FRIENDLY SET-UP AND CONTROL

The BARCODATA 801s and 1101 are based on BARCO's advanced digital architecture which provides user-friendly remote control of all set-up and display functions. Extremely precise, yet simple adjustments are accomplished through intuitive, on-screen menu-driven display.

SUPERB IMAGE QUALITY

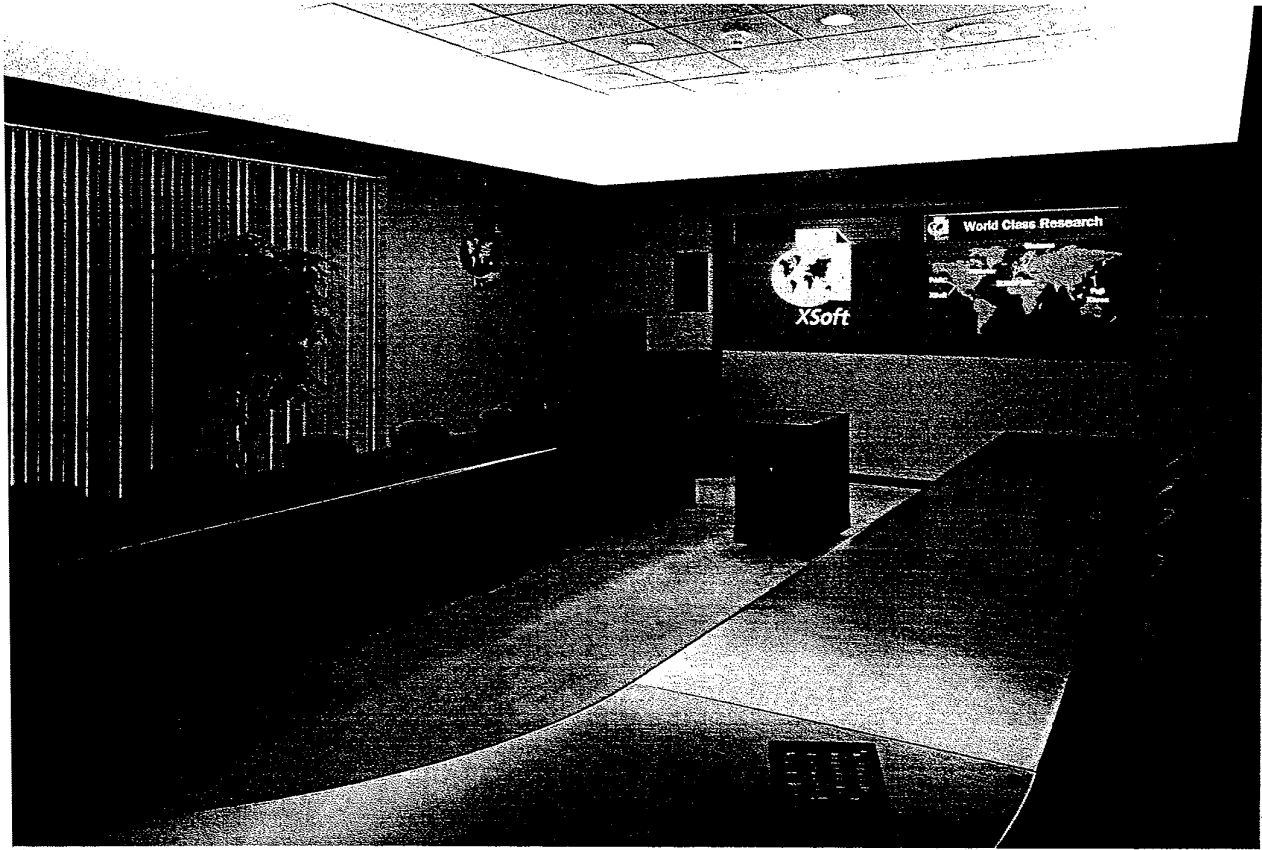
Utilizing BARCO's optional IRIS 800 Auto-Convergence unit, on-screen convergence can be achieved in less than three minutes. A sophisticated memory management system and auto-memory storage feature guarantee consistently sharp image quality.

▲ Their automatic adaptation to almost all types of personal computers in addition to their universal connection possibilities make the BARCODATA 801s and 1101 ideally suited for large screen software presentations and staff meetings. (Photo courtesy of Xerox at Infomart - Dallas, TX).

These capabilities, in addition to major circuit improvements allow the BARCODATA 801s and 1101 projectors to flawlessly render large screen computer based presentations, charts and spreadsheets with amazing slide-like quality.

This makes both units ideally suited for a wide range of presentation and training applications, including multimedia events, trade shows, computer software training sessions, boardroom meetings,....

■ Highly advanced optical system



▲ *The BARCODATA 801s and 1101 are the product of choice for boardroom meetings (Photo: X-Soft boardroom for Xerox Corporation-Courtesy of EISI-Mountain View, CA).*

Both the BARCODATA 801s and 1101 are based on an advanced, state-of-the-art optical system, offering unmatched image quality with excellent true colour reproduction.

BARCODATA 801s

- The BARCODATA 801s is provided with newly improved, high-definition, liquid cooled 8" square CRTs (5.7" phosphor area) with stabilized pressure chambers, which offer a consistent superb picture quality. F1.06 colour corrected, hybrid lenses deliver an optical resolution of 10 lp/mm and improved image contrast on screens up to 6 m (20 ft) wide.

BARCODATA 1101

- The BARCODATA 1101 is equipped with high brightness, high definition liquid cooled 9" CRTs (7.7" phosphor area). High definition colour corrected F1.15 hybrid lenses, liquid coupled with center+edge focus adjustment, deliver high light output and contrast on screens up to 8.8 m (29 ft).



Unequaled user-friendliness

Easy set-up and control

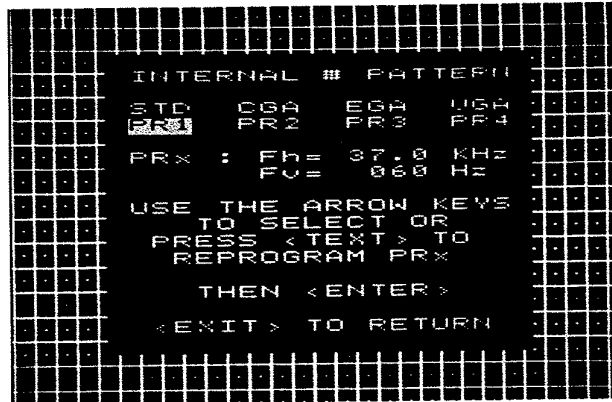
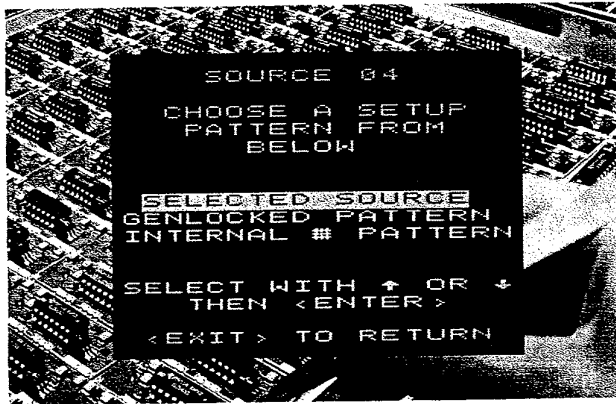
The BARCODATA 801s and 1101 are based on BARCO's advanced digital architecture. This offers not only outstanding specifications, but also facilitates the use and installation of the projectors.

LOGICAL ON-SCREEN MENUS

For simple geometry and convergence adjustments, the BARCODATA 801s and BARCODATA 1101 projector combines a user-friendly remote control unit with logical on-screen menus.

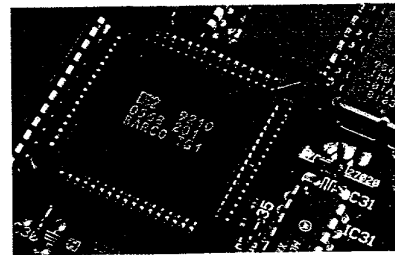
GUIDED ADJUSTMENT PROGRAM

The projector offers a guided adjustment program which directs the user through the complete alignment procedure in the most efficient way, and a random adjustment mode which can be used for immediate access to one specific parameter.



▲ Convenient, well organized on-screen menus (available in several languages), combined with the user-friendly infrared remote control unit, simplify all adjustments of the projector, even for first-time and non-skilled users.

▶ A convenient backlit infrared remote control unit facilitates control and adjustment of the projector.



▲ The BARCODATA 801s and 1101 utilizes microprocessor control and BARCO ASICs (Application Specific Integrated Circuits), which simplify adjustment and guarantee a consistent superb picture quality.

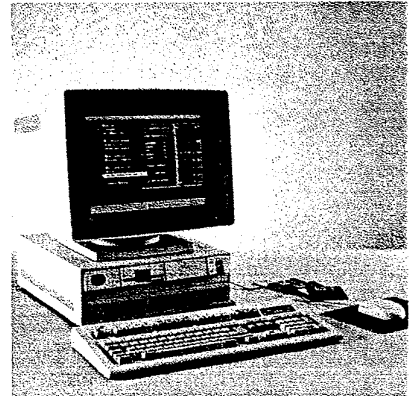
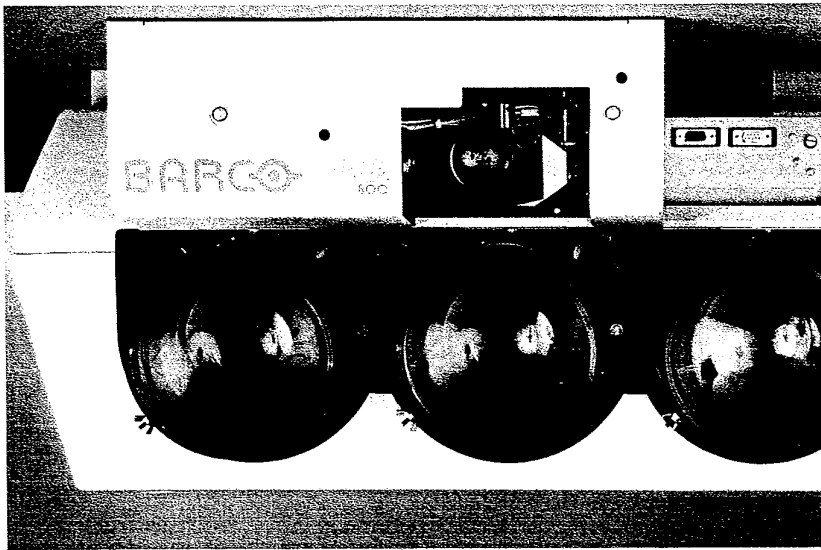
INTERNAL PATTERN GENERATORS

Image adjustments may be accomplished 'on source', or through the use of an internally generated pattern, genlocked on the connected source or to a pre-programmed frequency, to allow for adjustment of the projector in the absence of an external source.

IRIS 800 AUTOMATIC CONVERGENCE SYSTEM

The IRIS 800 is an optional user-friendly, automatic convergence system designed to automatically align the projected image on the screen faster and more accurately than ever before possible through the conventional 'manual' convergence process.

The user-friendly concept of BARCO's 'Projector Control' software, with mouse-driven, pull-down menus and dialogue boxes, facilitates the adjustment of the projectors connected to the central computer.



◀ *The IRIS 800 has a light-weight, rugged enclosure, and can be easily installed to the front of the projector.*

38 MEMORY BANKS

All image adjustments are individually set for each source and stored in one of the projector's 38 frequency related memory banks. Once image parameters are designated for each source, the projector will automatically select the correct settings for the source in use, thus providing consistently perfect image quality.

LDI: LINEAR DIGITAL INTERPOLATION

Once parameters are selected for at least two sources, the LDI (Linear Digital Interpolation) feature of the projector will automatically calculate the image parameters of all additional sources in order to approximate the new source settings. The LDI feature creates these new settings through the use of frequency dependent weighting algorithms thus eliminating the need for time consuming readjustments.

The IRIS 800 incorporates a unique hardware/software system, which utilizes a high resolution CCD camera in conjunction with an ultra light, high-quality front-surface mirror assembly. Together with built-in digital enhancement software this guarantees both a quick and precise alignment of the three projected images on the screen, even under high ambient lighting conditions.

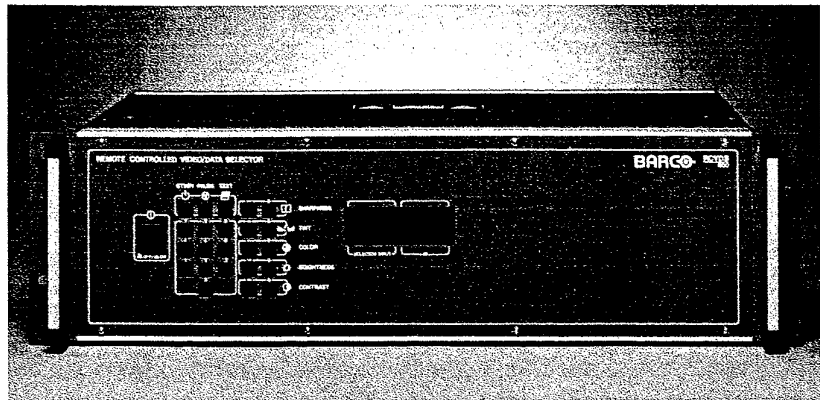
PROJECTOR SUPPORT SOFTWARE PACKAGE

Thanks to BARCO's optional proprietary projector support software package, it is possible to adjust brightness, contrast, hue, colour, sharpness and geometry and convergence settings for up to 256 projectors from one central point. It is even possible to store image settings for each source for future use on a computer hard disk or diskette. The software is available for IBM (or compatible) computers equipped with DOS operating system.



Optional peripheral devices

BARCO offers a wide range of peripheral devices and options, which further enhance the flexibility and versatility of the BARCODATA 801s and BARCODATA 1101.



RCVDS 800 SWITCHER

The Remote Controlled Video and Data Source Selector RCVDS 800 makes it possible to connect up to ten sources to the projector and to adjust all picture settings via the projector's infrared remote control.

For expanded use of the projector, it is possible to connect up to ten RCVDS 800 source selectors in series, so that up to 90 different sources may be connected simultaneously to a single projector.

REMOTE INFRARED RECEIVER

An additional remote infrared receiver facilitates the use of the projector's infrared remote control in difficult installations.

COMMUNICATION CABLES

Additional RS232/422 cables (D9/D9), with a length of 5 m (16'), 15 m (50') or 30 m (100') are available.

EXECUTIVE REMOTE CONTROL

An executive infrared remote control is available, to accommodate source selection and adjustment of user settings without allowing changes to the projector's geometry and convergence settings.

▲ *The RCVDS 800 allows for the connection of up to 10 different sources to one projector, and the adjustment of all picture settings via a convenient infrared remote control.*

SUSPENSION SYSTEM

BARCO's suspension systems allow the BARCODATA 801s or BARCODATA 1101 projector to be mounted from the ceiling, adapting the projector perfectly to the local mounting requirements.

FLIGHT CASE

Sturdy, easily transportable flight cases, for the packing of the BARCODATA 801s or BARCODATA 1101.

SPECIAL OPTIONS

BARCO offers a series of special options for non-standard applications (multi-screen applications, non-standard projection angles,...): contrast modulation kit, soft-edge matching kit, orbiting kit, convergence on green, automatic colour temperature alignment system...



Technical specifications

BARCODATA 801s

BARCODATA 1101

LIGHT OUTPUT*

At 10 % peak white:
At 20 % peak white:

900 lumen
800 lumen

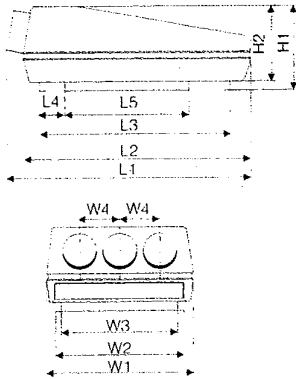
> 1000 lumen
690 lumen

CRTS

High brightness, high definition
liquid cooled 8" CRTs

High brightness, high definition
liquid cooled 9" CRTs (7.7"
phosphor area)

BARCODATA 801s



Dimensions:	mm	inch
L1	1000	39.37
L2	870	34.25
L3	735	28.94
L4	60	2.36
L5	415	16.34
H1	342	13.46
H2	295	11.61
W1	575	22.64
W2	494	19.45
W3	442	17.40
W4	180	7.09

LENSES

High definition, fully colour
corrected F1.06 hybrid lenses,
with centre+edge focus
adjustment

High definition colour corrected
F1.15 hybrid lenses, liquid
coupled with centre+edge focus
adjustment

OPTIONAL LENSES

-

Ultra high-definition F1.15
hybrid lenses, with an optical
resolution of 12 lp/mm,
optimized for dedicated screen
sizes

SCREEN SIZE (WITH STANDARD LENSES)

Min.:	1.2 x 0.9 m	(4' x 3')	2 x 1.5 m	(6.6' x 4.9')
Max:	6 x 4.5 m	(20' x 15')	8.8 x 6.6 m	(29' x 21.8')

SCAN FREQUENCIES

Horizontal: 15-65 kHz autolock
Vertical: 37-140 Hz autolock

MINIMAL RETRACE TIME

Horizontal: 3.3 μ s
Vertical: 300 μ s

OPTICAL RESOLUTION

10 lp/mm at 50 % MTF throughout the field

HORIZONTAL LINEARITY

> 97 % accuracy in the full horizontal frequency
range

RGB BANDWIDTH

75 MHz

INPUTS

- RGB analog (BNC-connectors), sync on green or separate sync
- RGB analog input on D9-connector
- Video (PAL, SECAM, NTSC 3.58, NTSC 4.43), loop through (2xBNC) with 75 Ohm termination switch
- 4-pin S-Video input, loop through with 75 Ohm termination switch

REMOTE CONTROL

A user-friendly infrared remote control with
backlighting controls:

- source switching
- user settings per source (sharpness, hue, colour, brightness, contrast)
- geometry per source (password protected)
- convergence per source (password protected)

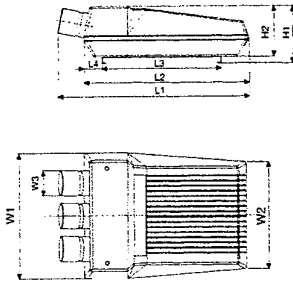
An optional executive remote control unit is
available for control of source switching and user
settings per source

SPECIAL FEATURES

- 38 frequency-related memory banks
- L.D.I. (Linear Digital Interpolation)
- Effective on-screen display: installation screens, help screens, barscale display of user settings, on-screen display of source frequencies
- Automatic storing of all adjustments
- Ability to set parameters to midposition
- Colour temperature adjustment (3200 K, 6500 K, 9300 K, or custom)
- Special sharpness control: improves picture quality for high-frequency sources
- Text generators for other languages are available
- The BARCODATA 801s is upgradable to a BARCOGRAPHICS 801s

* Measurement method available upon request

BARCODATA 1101



Dimensions:	mm	inch
L1	1174	46.2
L2	1014	39.9
L3	735	28.9
L4	110	4.3
H1	355	13.9
H2	315	12.4
W1	782	30.8
W2	665	26.2
W3	158	6.2

WEIGHT

BARCODATA 801s:
Net weight: 64 kg - 141 lbs.
Shipping weight: 80 kg - 176 lbs.

BARCODATA 1101:
Net weight: 76 kg - 167 lbs.
Shipping weight: 105 kg - 231 lbs.

POWER CONSUMPTION

BARCODATA 801s: 350 W
BARCODATA 1101: 390 W

ELECTROMAGNETIC INTERFERENCE

The BARCODATA 801s and 1101 comply with FCC part 15 Class A.

SAFETY REGULATIONS

The BARCODATA 801s and BARCODATA 1101 comply with UL 1950 and IEC 950.

RADIATION REGULATIONS

The BARCODATA 801s and BARCODATA 1101 comply with DHHS radiation emission standards 21 CFR Subchapter J.

ORDER INFORMATION

BARCODATA 801s:
230 V: 90 00831
120 V: 90 00838

BARCODATA 1101:
230 V: 90 00870
120 V: 90 00879

RCVDS 800:
230 V: 98 27450
120 V: 98 27459

Projector Control software: 98 27534

IRIS 800: 98 2769

Executive remote control: 98 27970

Remote infrared receiver: 98 27515

Communication cables:
5 m (16 ft.): 98 27770
15 m (50 ft.): 98 27560
30 m (100 ft.): 98 27570

Suspension system: 98 27341

Flight case: 98 27650

Special add-in boards:
- Soft-edge matching & contrast modulation kit: 98 27810
- Contrast modulation kit: 98 27800
- Orbiting kit: 98 27780

Contact: _____

BARCO Projection Systems
Head Office
Noordlaan 5
8520 Kuurne, Belgium
Tel.: +32/56/36 82 11
Fax: +32/56/35 16 51

BARCO

Photo on front page: Photo courtesy of Xerox at InfoMart - Dallas, TX.

The information and data given are typical for the equipment described. However any individual item is subject to change without any notice.

Ref. no. 59 90831 - Photographs: P. Labarque - Printed in Belgium